



Infra Rack

Infra Rack is a cost-effective and reliable solution designed for standard IT deployments. Featuring a durable modular structure, it supports efficient airflow management, integrated cable routing, and tool-free installation, enabling fast and practical deployment across a wide range of data center environments.

PRODUCT KEY FEATURES

01. Excellent Load Ratings

Featuring static load rating of 3300 lb (1500 kg) and dynamic load rating of 2640 lb (1200 kg).

02. Adjustable Mounting Rails

The equipment mounting rails are easily adjusted, providing the ability to quickly reposition from front to back. Frame interior includes depth markings for rereference.

03. Reversible Front and Split Rear Door with 80% perforation

The high-quality, rigid front and split rear doors feature an 80% open hexagonal perforation to maximize airflow.

04. Efficient Airflow Management

Grommet allows cable passthrough while improving heat dissipation efficiency, an optional air dam kit seals gaps around the perimeter of the front mounting rails to mitigate leakage of hot exhaust air.

05. Excellent Cable Management

Multiple cable management options are available, some of which feature toolless installation and removal.

06. Side Cable Trough

The front-to-rear cable trough provides a dedicated cable pathway through openings in the equipment mounting rails in 31.5 in (800 mm) wide cabinets.



07. Quick Assembly Circle

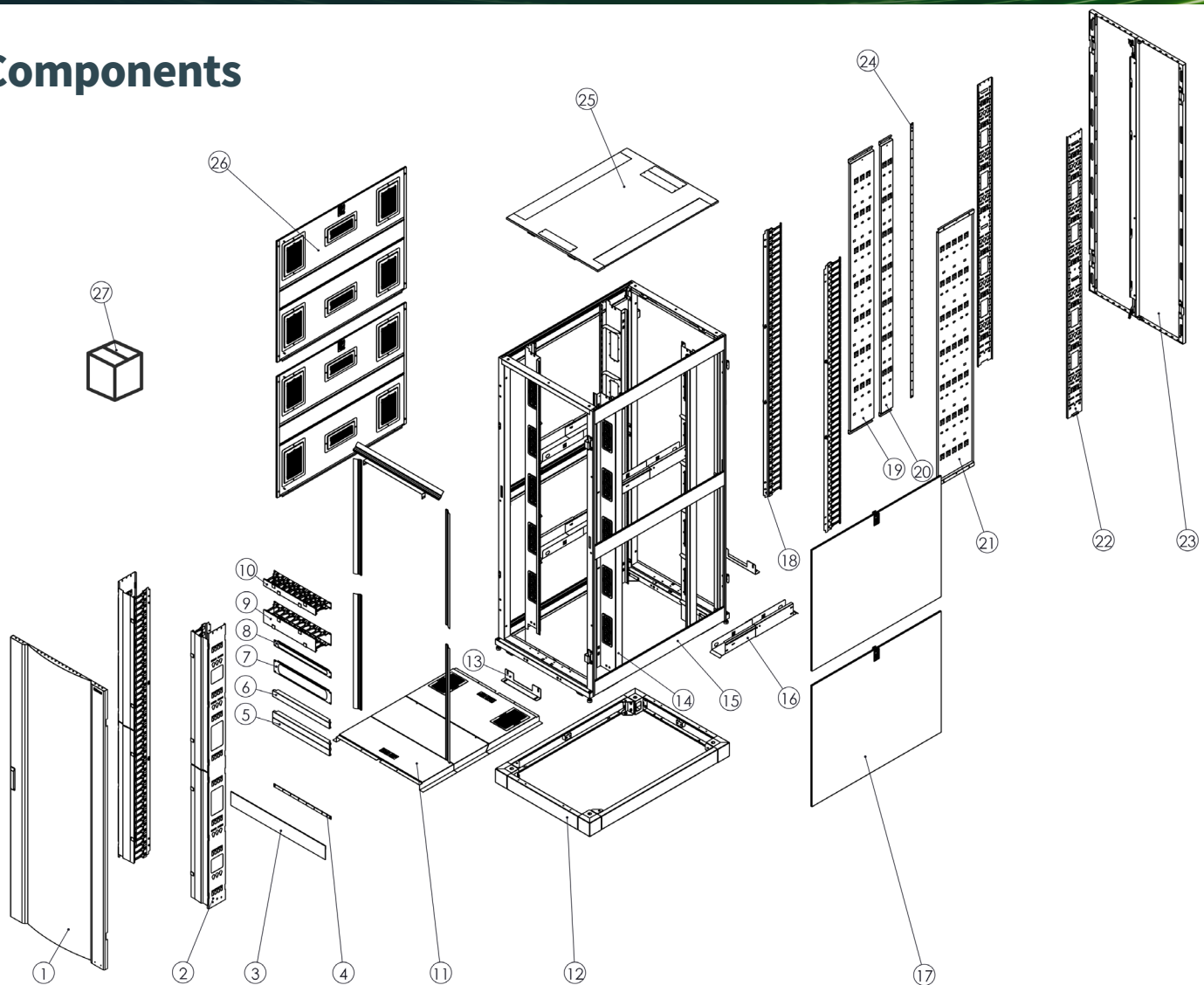
Build-up shipping and flat-pack shipping options. If ordering in flat packing, the quick assemble circle also helps to speed up deployment. Normally, 2 people can finish the assembly in 15 minutes.

08. Certification

Protection Rating: IP20
Specification: EIA-310E
Compliance: CE, RoHs



Components



1*	Single Perf Front Door	16	Side Through
2	Vertical Cable Manager Pro	17*	Solid Side Panel
3	Magnet Vent Skirt	18	Vertical Cable Manager Light
4	Horizontal Earthing Bar	19	Cable Tray, 200mm
5&6	Blanking Panel	20	Cable Tray, 100mm
7&8	Brush Blanking Panel	21	Cable Tray, 300mm
9&10	Horizontal Cable Manager	22*	PDU Bar
11**	Air Dam Kit	23*	Split Perf Rear Doors
12	Plinth Base	24	Vertical Earthing Bar
13*	L-bracket	25*	Full-depth Brush-sealed Top Panel
14*	Mounting Rail Kit	26	Brush Side Panel
15*	Frame	27*	Accessory Bag (60 sets of cage nuts)

* Standard Configuration; ** If the rear door is not included, the air dam kit must be used.



Dimension Tables

Height Options - in (mm)	
in	mm
23.6	600
31.5	800

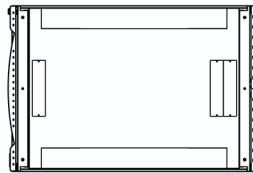
Height Options - in (mm)		
RU	* Overall Height	Frame Height
42	78.4 (1992)	77.0 (1956)
45	83.7 (2125)	82.2 (2089)
48	88.9 (2258)	87.5 (2222)

* Overall height measurements include casters and leveling feet.

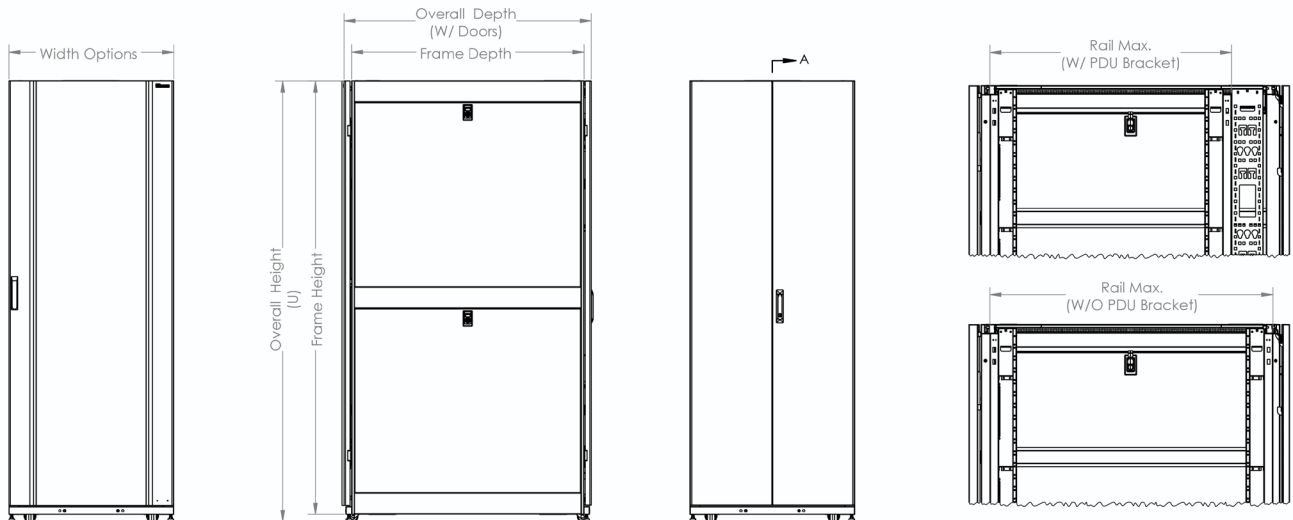
Depth Options - in (mm)			
Frame Depth	Overall Depth (With Doors)	** Rail Max. (w/ PDU Bar)	Rail Max. (w/o PDU Bar)
28.7 (728)	31.5 (800)	/	25.7 (654)
39.4 (1000)	42.1 (1070)	30.7 (780)	36.6 (930)
44.4 (1128)	47.2 (1200)	35.9 (912)	41.6 (1056)

** When adjusted to rail max., cable managers cannot be attached to rails.
The default rail to rail distance is 29.5".

Dimension Drawing



TOP VIEW



FRONT VIEW

SIDE VIEW

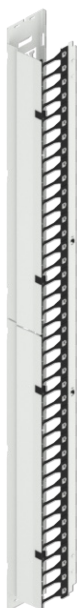
REAR VIEW

SECTIONAL A-A



Cable Management Accessory

Cable management accessories are designed to maintain neat and organized network cabling. Please note that the mounting rails must be recessed when installing cable managers.



Vertical Cable Manager Pro

- Finger openings are spaced in 1U increments for optimal cable management
- Attach to vertical equipment mounting rails
- Toolless install and removal
- Configure the cable manager with 31.5 in (800 mm) Infra Rack width or order separately
- X- 0=Black, 1=White, 2=Grey

Part Number				Cabinet Width - in (mm)	Finger Length - in (mm)	*Rail Setback - in (mm)
VCM-Pro	Height					
	42U	45U	48U			
410-09009	- 1X1	- 2X1	- 3X1	31.5 (800)	4.17 (106)	5.5 (139.7)



Vertical Cable Manager Light

- Finger openings are spaced in 1U increments for optimal cable management
- Attach to vertical equipment mounting rails
- Toolless install and removal
- Configure the cable manager with Infra Rack or order separately
- X- 0=Black, 1=White, 2=Grey

Part Number				Cabinet Width - in (mm)	Finger Length - in (mm)	*Rail Setback - in (mm)
VCM- Light	Height					
	42U	45U	48U			
410-00015	- 1X2	- 2X2	- 3X2	23.6 (600)/ 31.5 (800)	4.17 (106)	5.0 (127.0)



Cable Tray

- Maximize space between front and rear uprights
- Enables easy cable tie-down and better airflow
- Built from high-strength metal for lasting reliability
- Configure the cable tray with Infra Rack or order separately
- X- 0=Black, 1=White, 2=Grey

Part Number	Height (U)			Width - in (mm)
	42U	45U	48U	
301-09003	-0X1	-1X1	-2X1	3.94 (100)
	-3X1	-4X1	-5X1	7.87 (200)
	-6X1	-7X1	-8X1	11.81 (300)



Horizontal Cable Manager



- Provides horizontal cable management space
- With or without cable passthrough on the backside
- Universal design for any brand 19-inch rack and cabinet
- X- 0=Black, 1=White, 2=Grey

Part Number	Height (U)	Depth - in (mm)	Cutout at the back chassis
INV08-00009X	1	4.53 (115)	No
INV08-00010X	2	4.53 (115)	No
INV08-00011X	3	4.53 (115)	No
INV08-00012X	1	4.53 (115)	Yes
INV08-00013X	2	4.53 (115)	Yes
INV08-00014X	3	4.53 (115)	Yes

Side Cable Manager



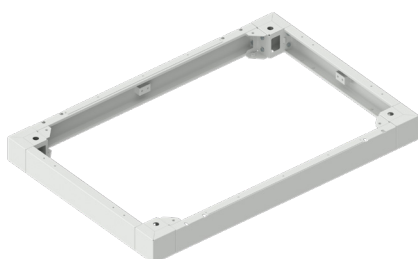
- Provide front-to-rear cable access
- Telescopic adjustment front and rear
[Rail to Rail: 21.0 in (533.4 mm) ~ 31.5 in (800.1 mm)]
- Attaches to rail openings in 31.5 in (800 mm) wide cabinets
- Configure the cable trough with Infra Rack or order separately
- X- 0=Black, 1=White, 2=Grey

Part Number	Length Range - in (mm)	Cabinet Width - in (mm)
410-00012-0X1	21.0(533.4) ~ 31.5 (800.1)	31.5 (800)



Structural or Mounting Accessory

Structural mounting accessory for cabinets, providing stable support and space for cable routing.



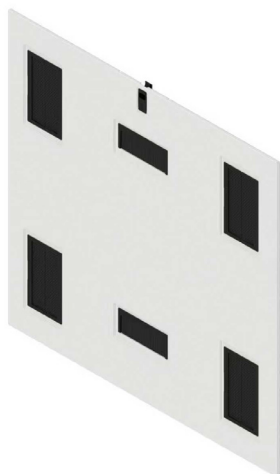
Plinth Base

- Raise the cabinet
- Conceal cables
- Facilitate installation and fixing
- Improve ventilation and dust protection
- Configure the plinth base with Infra Rack or order separately
- X- 0=Black, 1=White, 2=Grey

Part Number	Height (U)		Cabinet Width - in (mm)	Cabinet Depth - in (mm)
	4.8 (122)	8.8 (224)		
410-09008	-0X1	-1X1	23.62 (600)	31.50 (800)
	-2X1	-3X1	23.62 (600)	39.37 (1070)
	-4X1	-5X1	23.62 (600)	47.24 (1200)
	-6X1	-7X1	31.50 (800)	31.50 (800)
	-8X1	-9X1	31.50 (800)	39.37 (1070)
	-AX1	-BX1	31.50 (800)	47.24 (1200)

Thermal Management Accessory

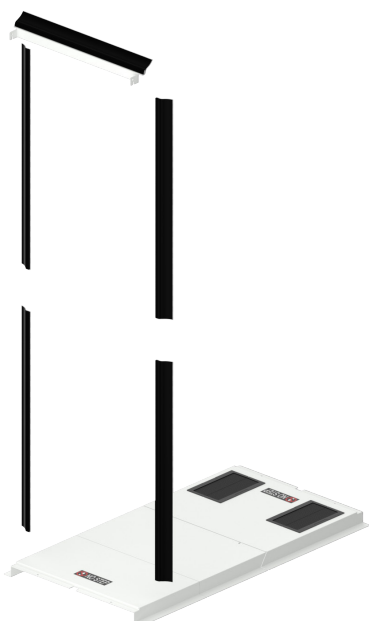
To enhance cooling performance in your facility, it's essential to separate conditioned air from exhaust air, direct conditioned air to equipment, and efficiently extract exhaust air from equipment. Thermal management accessories play a vital role in achieving this by regulating airflow within the cabinet, thus improving overall performance.



Brush Side Panel

- Two-piece brush side panels. Individual top/ bottom panels
- With locks, keyed to match doors
- Toolless installation and removal
- Electrically bonds with the cabinet frame when installed
- X- 0=Black, 1=White, 2=Grey

Part Number	Height (U)			Depth - in (mm)
	42U	45U	48U	
410-09010	-0X1	-1X1	-2X1	31.5 (800)
	-3X1	-4X1	-5X1	39.4 (1070)
	-6X1	-7X1	-8X1	47.2 (1200)



Air Dam Kit

- Block airflow around the sides and top of the equipment mounting space
- Maximizes airflow efficiency
- Configure the air dam kit with Infra Rack or order separately
- X- 0=Black, 1=White, 2=Grey

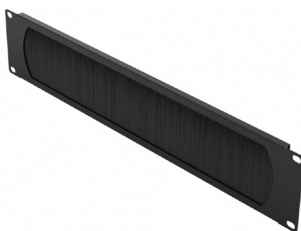
Part Number	Height (U)			Cabinet Width - in (mm)	Cabinet Depth - in (mm)
	42U	45U	48U		
410-09008	-0X1	-1X1	-2X1	23.62 (600)	31.50 (800)
	-3X1	-4X1	-5X1	23.62 (600)	39.37 (1070)
	-6X1	-7X1	-8X1	23.62 (600)	47.24 (1200)
	-9X1	-AX1	-BX1	31.50 (800)	31.50 (800)
	-CX1	-DX1	-EX1	31.50 (800)	39.37 (1070)
	-FX1	-GX1	-HX1	31.50 (800)	47.24 (1200)



Blanking Panel

- Engineered from high-quality, rigid plastic
- Toolless snap-in design makes installation quick and easy
- Universal usage fits with any brand cabinet that is 19-in and EIA-310E conformance
- X- 0=Black, 1=White, 2=Grey

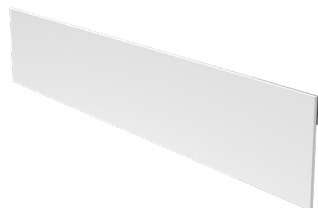
Part Number	Height (U)	Cabinet Width - in (mm)	Fire-rating
INV08-00002X	1	23.6 (600)/ 31.5 (800)	UL 94-V0
INV08-00003X	2	23.6 (600)/ 31.5 (800)	UL 94-V0



Brush Blanking Panel

- Engineered from high-quality, solid metal and UL 94-V0 bristle
- Universal usage fit with any brand cabinet that is 19-inch and EIA-310E conformance
- Bristle area allows cables to pass through it
- Pack with installation hardware

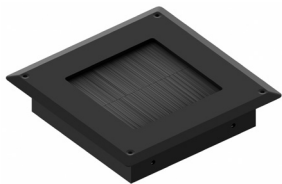
Part Number	Height (U)	Cabinet Width - in (mm)
INV08-00005B	1	23.6 (600)/ 31.5 (800)
INV08-00006B	2	23.6 (600)/ 31.5 (800)



Vent Skirt

- Engineered from high-quality, rigid plastic, also UL 94-V0 fire rating
- The installation of toolless magnets makes it quick and easy
- Fit with Inova cabinet
- Can customize to match with different size of cabinets
- X- 0=Black, 1=White, 2=Grey

Part Number	Height	Width - in (mm)	Fire-rating
INV08-00007X	100 mm	23.58 (599)	UL 94-V0
INV08-00008X	100 mm	31.46 (799)	UL 94-V0



Floor Tile Grommet

- Durable sealing materials
- Effectively prevents dust accumulation
- Supports neat and organized cable routing

Part Number	Height - in (mm)	Width - in (mm)	Thickness - in (mm)	Fire-rating
INV08-PB175175G	6.89 (175)	6.89 (175)	1.5 (38)	UL 94-V2




Grounding & Bonding Accessory

Stable grounding starts from the copper bar — ensuring safe and reliable electrical protection for the entire cabinet system.

Earthing Bar

- High-conductivity copper material with low grounding resistance
- Support multiple grounding points for flexible installation
- Suitable for all types of 19-inch cabinets and various heights of associated cabinets



Part Number	Height (U)	Cabinet Width - in (mm)
406-09001-0A1	1	23.6 (600)/ 31.5 (800)
406-09001-1A1	42	23.6 (600)/ 31.5 (800)
406-09001-2A1	45	23.6 (600)/ 31.5 (800)
406-09001-3A1	48	23.6 (600)/ 31.5 (800)



Choose Us, Choose More Options

Designed as a solid and dependable foundation, the Infra Rack delivers consistent performance where simplicity, durability, and practicality matter most. Equipped with essential accessories including cable management, airflow management, and grounding components, it ensures orderly installation, efficient cooling, and safe operation for everyday data center applications. Partner with us for a smarter, greener future.

Cabinet Warranty-5 Years.

For inquiries and consultation, contact sales@inovadc.com.